

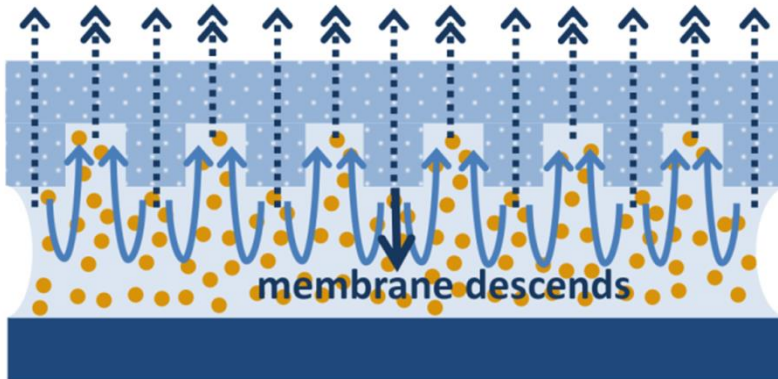
# Templated Evaporative Lithography

Talha A. Arshad & Roger T. Bonnecaze

*The University of Texas at Austin*



**2** heterogeneous evaporation drives convection



The template is removed once drying is complete



- D. J. Harris, H. Hu, J. C. Conrad and J. A. Lewis, *Physical Review Letters*, 2007, **98**, 148301.
- Arshad, T.A. and Bonnecaze, R.T., *Nanoscale*, 2012, **5**, 624-633.

