

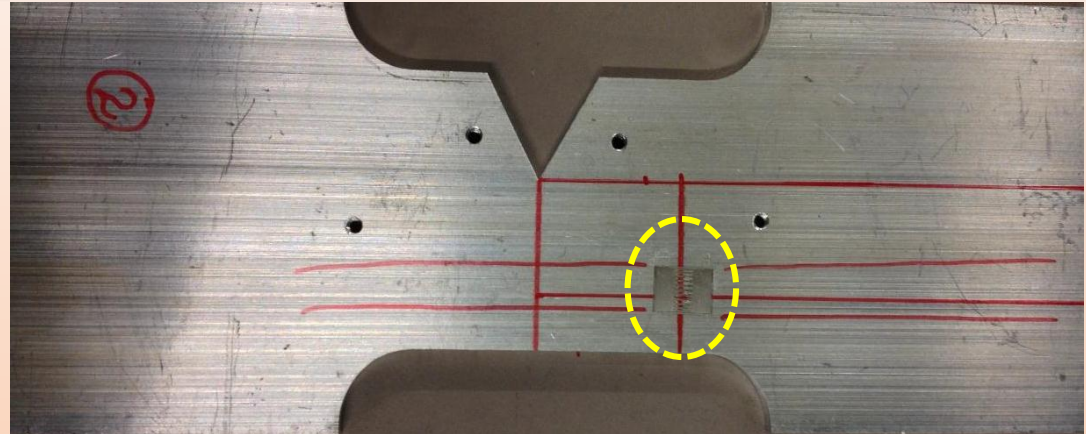
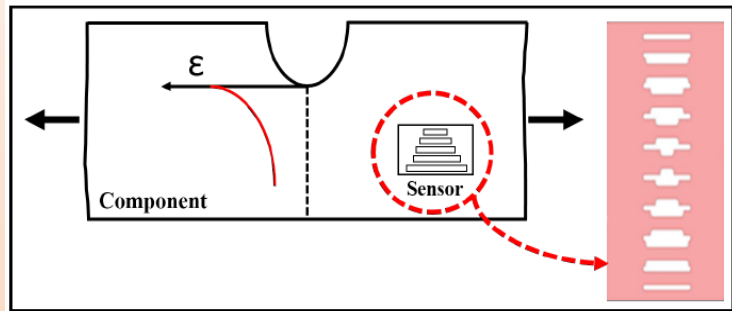


Structural Health Monitoring using Fatigue Sensor

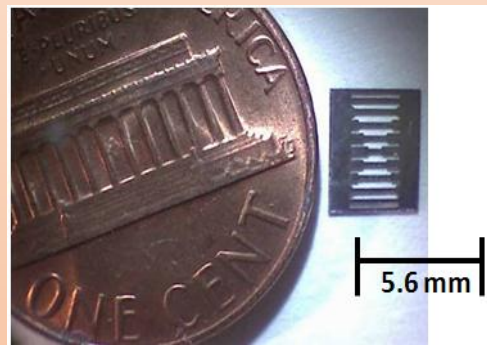
Subash Gokanakonda, Muralidhar K. Ghantasala & Daniel Kujawski

Dept. of Mechanical and Aeronautical Engr., Western Michigan University,
1903 W. Michigan Ave., Kalamazoo, MI 49008

CAViDS



Schematic of the concept of the Fatigue Sensor



Prototype Sensor



Wireless Data Acquisition system

